



FINE ART

HANDCRAFTED LIGHTING

2023 SPRING SUPPLEMENT
ANTONIA





ANTONIA

Since the turn of the 20th century, when the wonder of electric light was thrust into the mainstream of civilization, it begged designers to integrate its newfound relevance into their work. One hundred years later, with new technology, the splendor of design continues to evolve, and we reinvent the classics of the past while still paying homage to the masters that came before.

The Antonia lifestyle “steps into the light” in her collaboration with Fine Art Handcrafted Lighting with a seamless marriage between two iconic design styles, Art-Deco and Mid-Century Modern. The pendants and sconces are carefully handcrafted to transition from parchment to magnificent glass, culminating in a stunning beam of light. The contemporary design, featuring soft curves and the inclusion of metals, is a testament to the luxury and elegance of the past while providing sophisticated beauty to today’s audience. The Antonia Collection boasts a range of exquisite finishes, including our newest Soft Ombré Bronze & Soft Ombré Silver, with the choice of two parchment colors, Charcoal and Smoke. Also available with no parchment. With its versatile options, the Antonia Collection is truly a sight to behold.

Antonia Caicedo is a well curated interior architect and interior designer, having executed several international projects in Paris, Miami, Park City, Houston and Bogotá among others.



52" LINEAR PENDANT

Model #
924140-311 Standard Gold Leaf/Brass/Charcoal Parchment

Dimensions
H 10" (25 cm) W 52" (133 cm) D 5" (13 cm)
Min Ht: 16" (41 cm) Max Ht: 124" (315 cm)

Electrical
Canopy: US/INTL: MR16, GU10, 6.5w max (Qty. 2)
Fixture: US/INTL: Integrated LED, 6.5w, 3000K (Qty. 2)
Total RAW Lumens: 2160
Upper & lower lights can be wired independently for single or dual light control.
Not suitable for vaulted ceilings.
Suspended by adjustable cables.

FINISH/PARCHMENT OPTIONS Available in Soft Ombré Silver and Soft Ombré Bronze and our 5 Standard Finishes.
See page 6 for complete ordering options.



51.5" LINEAR PENDANT

Model

923140-612 Soft Ombré Bronze/Brass/Smoke Parchment

Dimensions

H 28.5" (72 cm) W 51.5" (131 cm) D 5.5" (14 cm)

Min Ht: 33.5" (85 cm) Max Ht: 100" (254 cm)

Electrical

Canopy: US/INTL: MR16, GU10, 6.5w max (Qty. 4)

Fixture: US/INTL: Integrated LED, 6.5w, 3000K (Qty.10)

Total RAW Lumens: 8100

Upper & lower lights can be wired independently for single or dual light control.

Each rod comes come in connectible segments for customizable length: (1) 3", (1) 6", (2) 12", (2) 18"

Not suitable for vaulted ceilings.

Parchments are ethically procured as by-products of the meat industry, and no animal is harmed for the purpose of its skin. This is a natural material and therefore is subject to change from hide to hide.



16" ROUND PENDANT

Model

923840-611 Soft Ombré Bronze/Brass/Charcoal Parchment

Dimensions

H 28.5" (72 cm) W 16" (41 cm)

Min Ht: 33.5" (85 cm) Max Ht: 100" (254 cm)

Electrical

Canopy: US/INTL: MR16, GU10, 6.5w max (Qty. 1)

Fixture: US/INTL: Integrated LED, 6.5w, 3000K (Qty. 6)

Total RAW Lumens: 4230

Upper & lower lights can be wired independently for single or dual light control.

Each rod comes come in connectible segments for customizable length: (1) 3", (1) 6", (2) 12", (2) 18"

Not suitable for vaulted ceilings.

FINISH/PARCHMENT OPTIONS Available in Soft Ombré Silver and Soft Ombré Bronze and our 5 Standard Finishes.
See page 6 for complete ordering options.



7" ROUND PENDANT

Model

923340-122 Standard Black Iron/Nickel/Smoke Parchment

Dimensions

H 28.5" (72 cm) W 7" (18 cm) D 3" (7 cm)
 Min Ht: 33.5" (85 cm) Max Ht: 100" (254 cm)

Electrical

US/INTL: Integrated LED, 6.5w, 3000K (Qty. 2)

Total RAW Lumens: 1260

Not suitable for vaulted ceilings.

Each rod comes come in connectible segments for customizable length: (1) 3", (1) 6", (2) 12", (2) 18"



28" RIGHT SIDE FACING SCONCE

Also available left side facing: MODEL #922550-x

Model

922750-722 Soft Ombré Silver/Nickel/Smoke Parchment

Dimensions

H 28" (71 cm) W 7" (18 cm) D 4" (10 cm)

ADA Compliant

Electrical

US/INTL: Integrated LED, 6.5w max, 3000K (Qty. 2)

Total RAW Lumens: 1260

Parchments are ethically procured as by-products of the meat industry, and no animal is harmed for the purpose of its skin. This is a natural material and therefore is subject to change from hide to hide.

HOW TO ORDER FROM THE ANTONIA COLLECTION

1

SELECT MODEL #

Model # #####-xxx

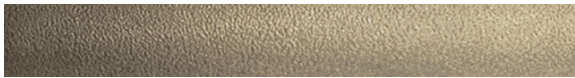
1. Model # _____
2. Finish _____
3. Metal Ring _____
4. Parchment _____

2

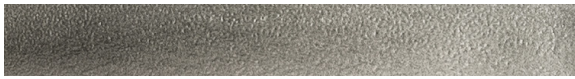
FINISH OPTIONS

ANTONIA COLLECTION FINISH OPTIONS

Soft Ombre Bronze (-6xx)



Soft Ombre Silver (-7xx)



Also available in our five STANDARD FINISH OPTIONS

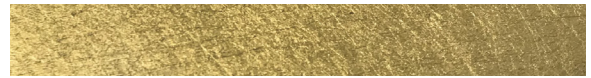
Black Iron (-1xx)



Bronze (-2xx)



Gold Leaf (-3xx)



Silver Leaf (-4xx)



Soft Gold Leaf (-5xx)



3

METAL RING OPTIONS

Brass (-x1x)



Polished Nickel (-x2x)



4

PARCHMENT OPTIONS

See page 9 for a look at parchment variation.



No Skin (-xx0)



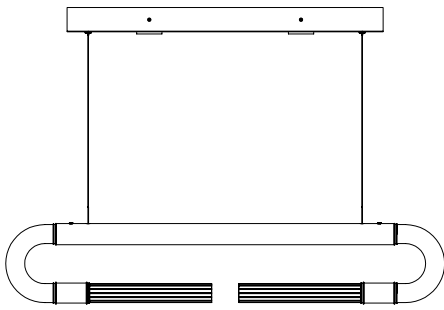
Charcoal (-xx1)



Smoke (-xx2)

For any other finish/parchment configuration, contact your Territory Manager or Customer Service.

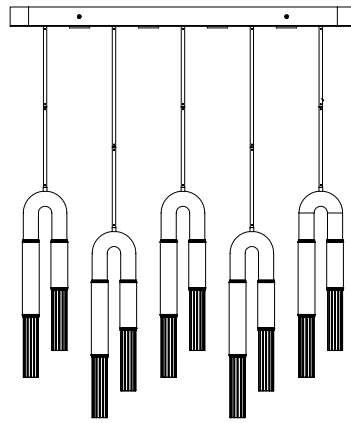
ANTONIA COLLECTION



52" LINEAR PENDANT

Model #
924140-xxx

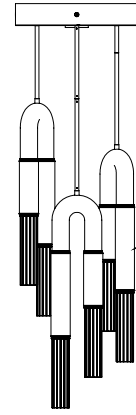
Dimensions
H 10" (25 cm) W 52" (132 cm) D 5" (13 cm)
Min Ht: 16" (41 cm) Max Ht: 124" (315 cm)



51.5" LINEAR PENDANT

Model #
923140-xxx

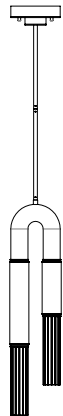
Dimensions
H 28.5" (72 cm) W 51.5" (131 cm) D 5.5" (14 cm)
Min Ht: 33.5" (85 cm) Max Ht: 100" (254 cm)



16" ROUND PENDANT

Model #
923840-xxx

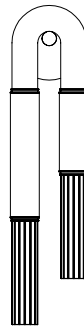
Dimensions
H 28.5" (72 cm) W 16" (41 cm)
Min Ht: 33.5" (85 cm) Max Ht: 100" (254 cm)



7" ROUND PENDANT

Model #
923340-xxx

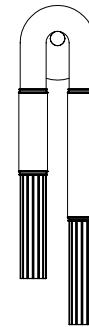
Dimensions
H 28.5" (72 cm) W 7" (18 cm) D 3" (7 cm)
Min Ht: 33.5" (85 cm) Max Ht: 100" (254 cm)



28" LEFT SIDE FACING SCONCE

Model #
922550-xxx

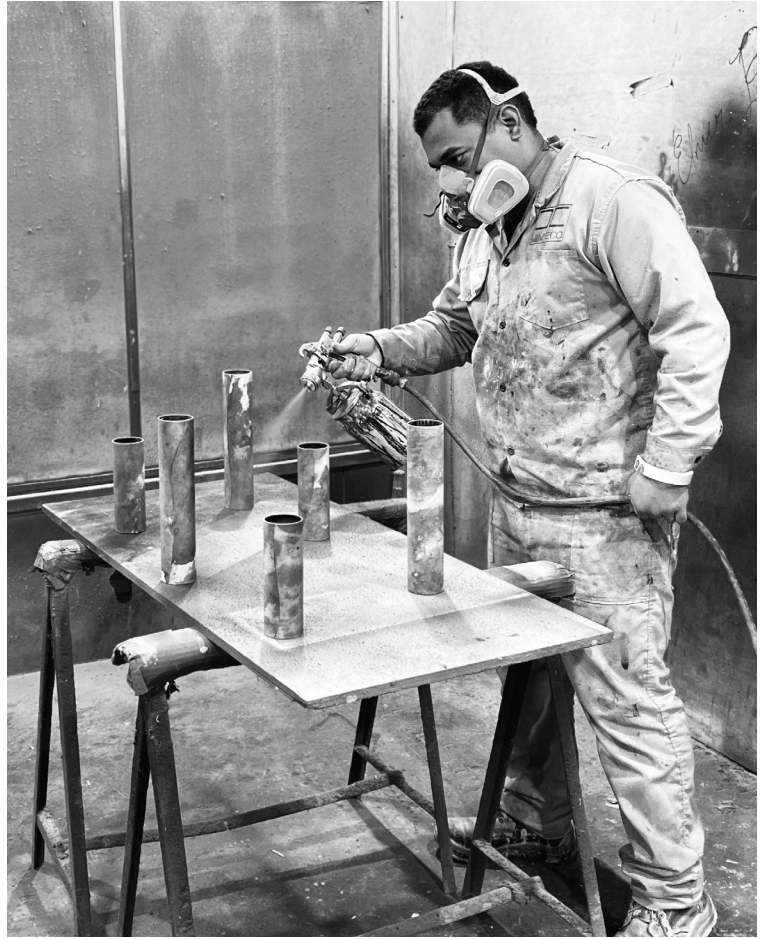
Dimensions
H 28" (71 cm) W 7" (18 cm) D 4" (10 cm)



28" RIGHT SIDE FACING SCONCE

Model #
922750-xxx

Dimensions
H 28" (71 cm) W 7" (18 cm) D 4" (10 cm)



Parchments are ethically procured as by-products of the meat industry, and no animal is harmed for the purpose of its skin. This is a natural material and therefore is subject to change from hide to hide.





CUSTOMER SERVICE customerservice@finearthl.com **SALES** sales@finearthl.com **SHOWROOMS** DALLAS, HIGH POINT, MIAMI
3840 WEST 104TH STREET, STE. 20, HIALEAH, FL 33018 **T** 305.821.3850 **FINEARTHL.COM**

© 2023 Fine Art Handcrafted Lighting. All Rights Reserved. There is only one source of authentic Fine Art Handcrafted Lighting™ and Fine Art Lamps® products. There are many who attempt to emulate or copy our proprietary designs to benefit from our company's heritage, reputation and prestige. When specifying lighting by Fine Art Handcrafted Lighting, the professional is assured of its authenticity and exclusivity. Fine Art Handcrafted Lighting vigorously defends its intellectual property in the United States and internationally to protect our clients from counterfeit product and inferior quality copies.



Made in America